

Thermostatic Low Pressure Bar Shower & Sliding Rail

5 Year Warranty Terms & Conditions:

In the unlikely event that you should experience any defect in the materials or workmanship of your new Abode product within FIVE years of purchase, the purchaser's sole remedy shall be the replacement (at the manufacturer's discretion) of all or any part of the product that is defective. Valves are guaranteed for a period of TWO years from purchase. Decorative surface finishes and O-rings are guaranteed for ONE year from the date of purchase provided that our advice concerning care has been observed and no scouring agents have been used.

This is provided that the product has been used for normal domestic purposes in the UK and that the care, installation and maintenance instructions have been observed. The warranty extends to the original purchaser only. You should retain a copy of your dated invoice as proof of purchase to validate any claims under this warranty.

Marks and scratches caused by improper installation or accidental damage are not covered by this guarantee. Neither are shade variations or any damage or defect caused by incorrect installation or abuse of the fitting.

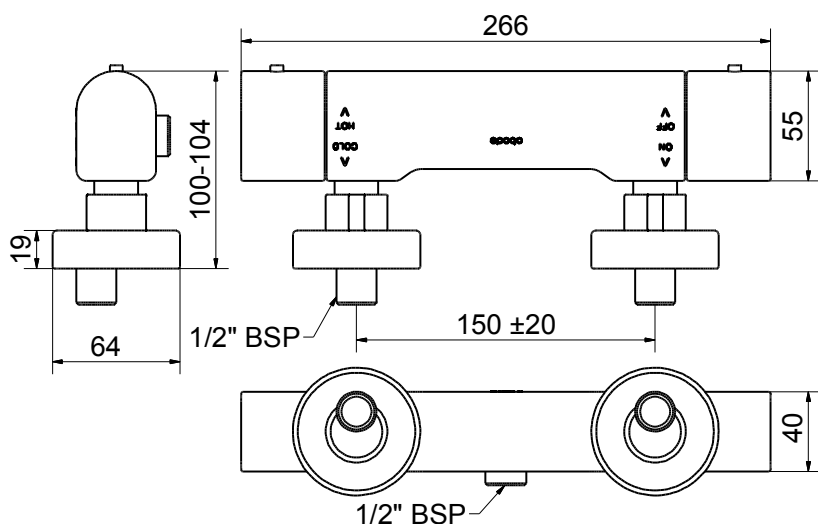
As we are continuously improving and developing our products range, finishes & colours, in the event of a valid claim, we may not be able to provide an identical replacement for the defective product throughout the warranty period. Where an identical product is no longer available, we will supply the nearest equivalent from our then current product range. In assessing your claim, we must be given the opportunity to inspect the product as installed prior to removal. Any product returns must be packaged carefully as received and complete.

No other warranties, express or implied, are made, including merchantability or fitness for a particular purpose. Under no circumstances shall the manufacturer be liable for any loss or damage arising from the purchase, use or inability to use this product, or for any special, indirect, incidental or consequential damages. No liability is accepted for consequential damage to other household fixtures, fittings or furnishings arising from this claim, even if attached to the product. No installer, dealer, agent or employee of Abode Home Products Limited has the authority to modify the obligations or limitations of this warranty.

Product Care Instructions:

To maintain the appearance of this product, ensure that it is regularly cleaned only using a clean, soft damp cloth. A solution of warm water and a mild liquid detergent may be used where necessary, and then the fitting rinsed thoroughly and wiped dry. **Any other cleaning action or cleaning products will invalidate your warranty.**

Abrasive cleaners, scouring cleaners, limescale cleaners and acidic cleaners **must not be used** under any circumstances. Avoid contact with all solvents (including chlorinated solvents, ketones or acetones as these may result in surface deterioration or etching). Also avoid contact with any harsh household chemicals such as bleach cleaners, drain cleaners, rust removers, paint strippers and toilet bowl cleaners, toothpaste, mouthwash, bar keepers friend or Brasso.



abode

Please leave these instructions for your customer after installation.

Step 1: Installation Preparation:

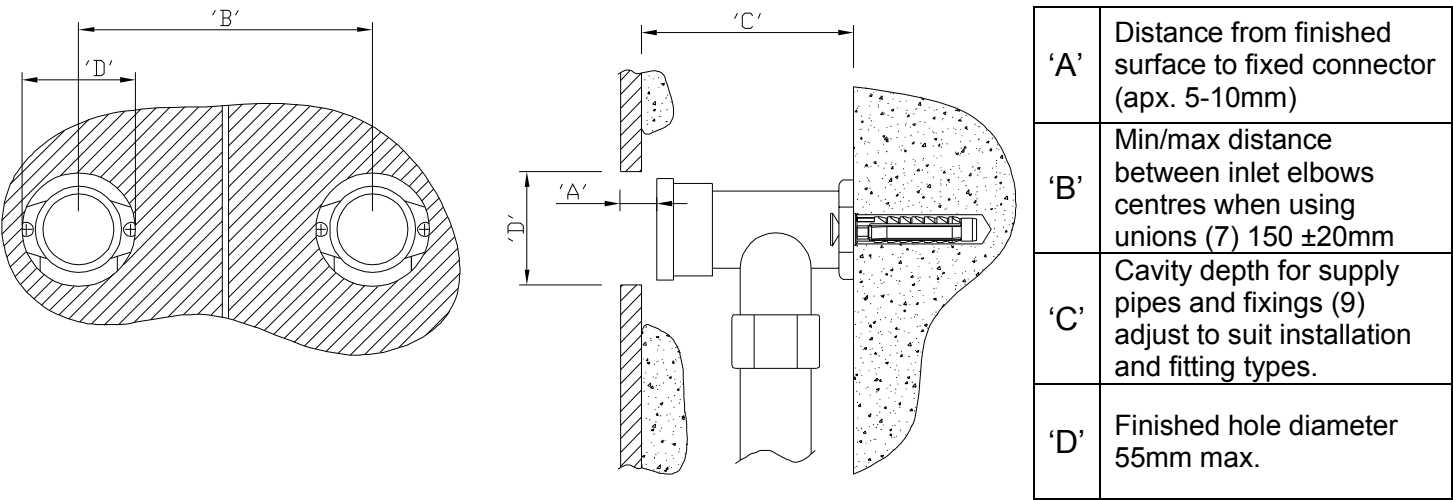
All parts should be removed from their packaging and inspected for any transport damage and completeness against the diagram key prior to installation; you should read these instructions throughout before commencing installation.

We do not accept responsibility for problems that may occur through improper installation. **Always ensure you have sufficient hot and cold water pressure available to allow correct function before specifying or installing this product.**

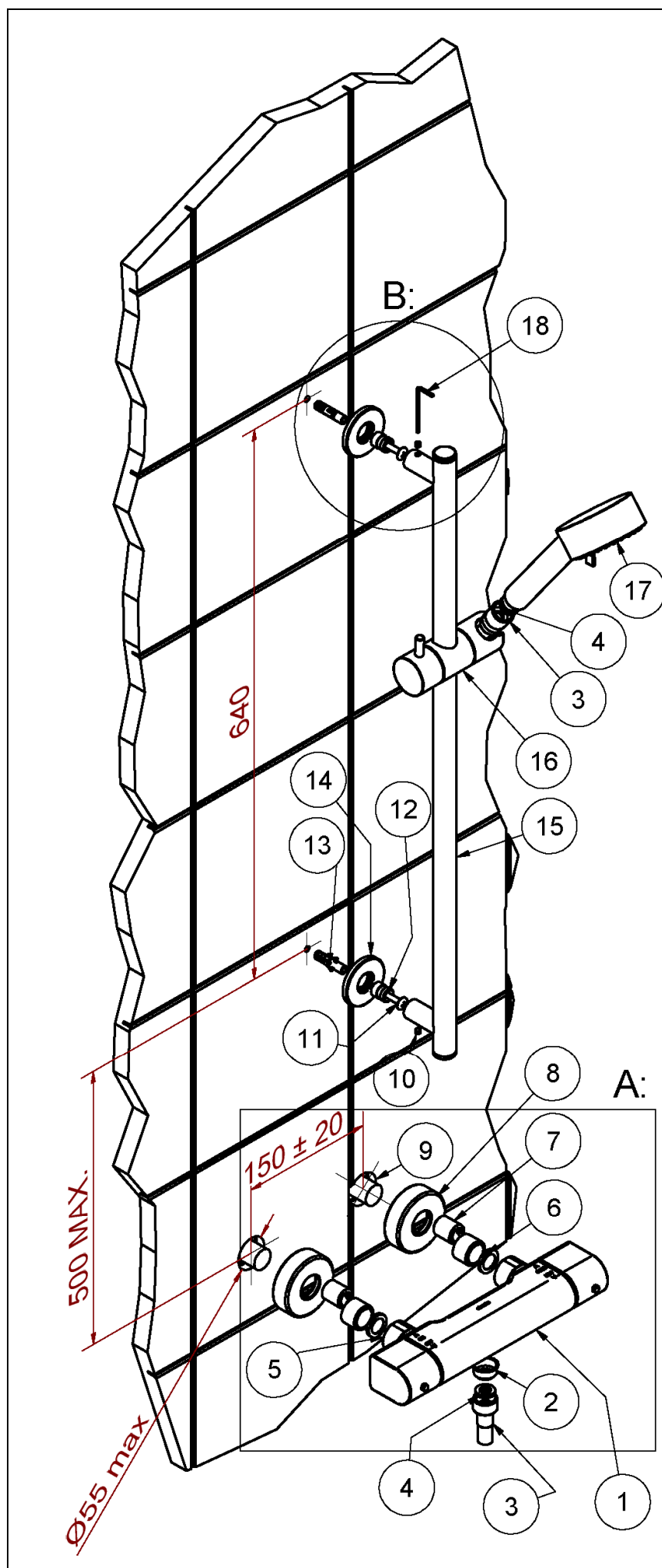
We strongly recommend installing particle filters and isolation valves to both the hot and cold feed pipes in an accessible position. This will help to prevent premature failure of the valves and ease any future maintenance.

Shut off your water heating system and ensure that your mains stopcock is closed. Ensure both the hot and cold water supplies are isolated before commencing installation.

1. Open the wall out to the required width and depth for supply pipes and elbows (9).
 - All serviceable parts should be given suitable access to allow easy future maintenance.
 - When preparing the piping run to this shower, arrange the hot pipe to be received to the left hand side of the shower when viewed from the front.
 - You should ensure that both the product and required fittings will fit into the depth and area of the mounting surface available before installation. Roughly assemble the product and plumbing connections to establish the required sizes 'A-D'.

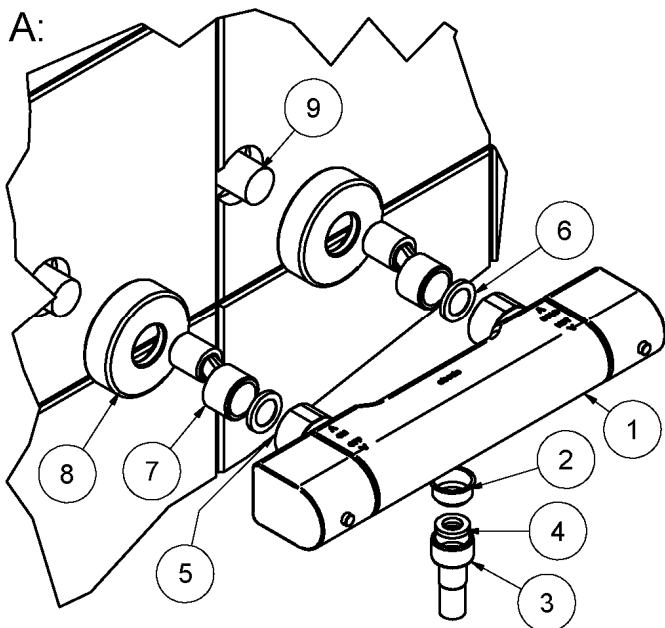


2. Fix inlet pipes and elbows (9) securely to the wall using appropriate fixings. Note these fixings should be secure enough to support the shower body weight (1) during use.
 - Before installing the new shower **it is essential that you thoroughly flush through the supply pipes without the shower control (1) attached** in order to remove any remaining solder, swarf or impurities from your system. Failure to carry out this simple procedure could cause problems or damage to the workings of the shower and invalidate the warranty.
3. Screw the eccentric unions (7) into the elbows (9) using PTFE tape or sealing compound to ensure a water tight connection. Note the 3/4" exit centre distances of unions (7) should match the shower inlet centres (5) at 150mm, be of equal projection from the finished wall level and allow enough thread length to include cover plates (8), seals (6) and fixing nut (5). Test the water tightness of all inlet pipes and connections before progressing with the installation.
4. Make good the finished wall surface using tiles or similar, now prepare holes 'D' in the tiles. Ensure decorative covers (8) will cover the finished hole diameter 'D'.



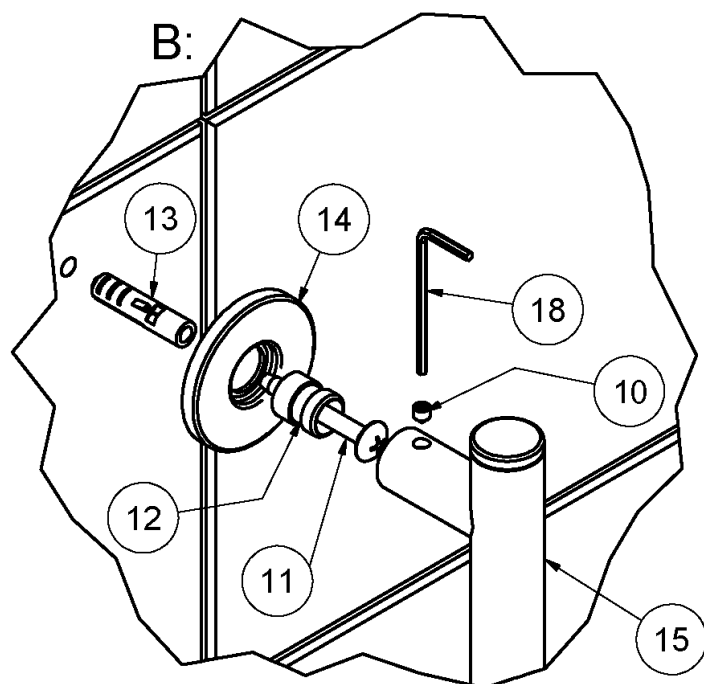
Key	Description	Qty.
1	Bar shower (brass body & ABS handles) inc. non return valves	1
2	½" outlet plastic cap	1
3	½" x ½" x 1.5M Smoothflex shower hose	1
4	½" rubber seals	2
5	½" floating fixing nuts (preassembled to (1))	2
6	¾" rubber seals with mesh filter	2
7	½" x ¾" eccentric unions	2
8	ABS cover plates	2
9	Supply feeds & ½" elbows	0
10	Sliding rail grub screws	2
11	Self tapping screws	2
12	Brass connectors	2
13	Rawl plugs	2
14	51mm ABS cover plates	2
15	Vertical sliding rail	1
16	ABS sliding arm	1
17	ABS 3 position showerhead	1
18	2.5mm AF Allen Key	1
n/a	8 litres / minute white flow restricting washer	1

Step 2: Install The Shower Bar:



1. Screw the cover plates (8) onto the eccentric unions (7) flush to the wall. Watchfully Seal around the finished wall surface cover plates (8) to prevent water ingress into the wall. Note take care not to apply sealant to sections of thread on union (7) that are required for fixing.
2. Place meshed seals (6) into fixing nuts (5).
3. Hand tighten fixing nuts (5) to eccentric unions (7).
4. Place a cloth or similar over the fixing nuts (5) then tighten nuts (5) fully using a spanner. Take care not to mark the chromed surfaces of the shower.
5. Remove the plastic cover cap (2) from the underside of the shower bar (1).

Step 3: Install The Sliding Rail:



1. Mark in pencil the position of the 640mm hole centres to fix the rail, ensure to observe the 500mm maximum vertical distance from the shower inlets to the bottom rail fixing hole. Ensure the holes are vertical using a level.
2. Carefully drill 7mm holes in the wall to suit the Rawl plugs (13), note if the wall type is not suitable for these plugs you should substitute them for appropriate fixings. Push the plugs (13) flush into the holes.
3. Loosen grub screws (10) using Allen key (18) to allow the brass connectors (12) to be released. Screw the brass connectors (12) firmly to the plugs (13) using screws (11).
4. Place the cover plates (14) over connectors (12). Ensure the sliding arm (16) is orientated as shown with the **showerhead bracket to the right**.
5. Push the sliding rail (15) over the brass connectors (12) and onto the cover plates (14), fix the sliding rail (15) to the brass connectors (12) by tightening grub screws (10). Seal around the cover plates (14) to prevent water ingress.
6. Screw the knurled end of hose (3) to the underside of the shower bar (1) ensuring to use seal (4).
7. Screw the opposite end of hose (3) to the showerhead (17) again using seal (4). Note when the hose is new it will try to retain it coiled packaged shape, with use and heat the Smoothflex hose will find a more 'natural' shape. The hose (3) can be looped behind the shower bar (1) and in between fixing nuts (5) for a neater appearance.

After Installation:

Once you have visually checked the installation of the new product and all connections, ensure that all other fittings are closed except the new product which should be left open.

Turn on your water heating system and ensure that your mains stopcock is open. Reconnect both the hot and cold water supplies to this fitting.

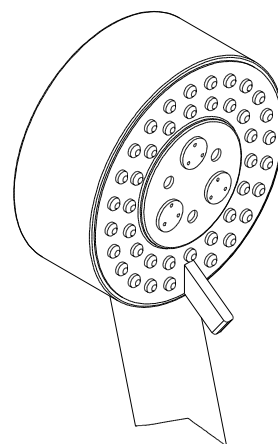
Check the function of flow and function of hot, cold and mixed water, where possible check the function of the thermostatic valve maximum temperature, and shut off function by interrupting the cold water source during use.

Turn off the product and check carefully for any leaks around all connections on the fitting and adjoining plumbing. If possible return to the installation after a longer period to double check for slower leaks. If pressure testing equipment is available check the installation to the maximum recommended pressure.

Clean the product to remove any marks created during installation as instructed then place a bag over the product to protect the product finish until it is ready for use.

Using This Product:

- The left side handle controls the flow rate and is operated anticlockwise on through a quarter turn.
- The right side handle controls the temperature and is operated anticlockwise for higher temperatures. The factory set maximum temperature is 38°C, this can be overridden to a maximum of 42°C with the button handle button pressed.
- The sliding arms showerhead section rotation is limited to 90° to prevent accidental damage, to adjust the height of the showerhead loosen the arm lever (16) and slide the rail vertically before tightening the arm lever.
- The showerhead has 3 positions:
 - Position 1 (massage): turn handset clockwise from the centre position as shown to select the water saving massage mode
 - Position 2 (normal & massage): when the showerhead lever is in the central position as shown.
 - Position 3 (normal): turn the handset anti-clockwise from the centre position as shown to select the normal rain spray mode. The normal sprayhead jets are rubber so can be rubbed clean if they become blocked due to limescale deposits.



Troubleshooting: If this product is not functioning correctly please check the following first:

- 1) Check the incoming stopcock and any service (isolation) valves are fully open.
- 2) That the hot water system is working correctly.
- 3) Check the mesh filters (6) are not blocked or partly blocked.
- 4) Check the sprayhead nozzles are not blocked, if they are, rub them clean.
- 5) Check the hot and cold water temperatures meet the requirements (shown in technical data, this can be checked at any alternative outlet).
- 6) Check the hot and cold water pressures meet the requirements (shown in technical data).
- 7) Check that the Smoothflex hose (3) is not kinked twisted or damaged.

Important Technical Data:

- Minimum operating pressure 0.3 bar (4.5 l/m from showerhead)
- Preferred operating pressure 0.5-2 bar (6.1-13.5 l/m from showerhead)
- Maximum operating pressure 5 bar*
- Maximum cold water temperature 25°C
- Minimum hot water temperature 60°C
- Maximum recommended hot water temperature 80°C
- Factory default maximum 'safe zone' output temperature 38°C to EN1287
- Unmodified maximum output at 3.0 bar = 17 litres per minute
- Maximum output at 3.0 bar (with flow limiter installed) = 8 litres per minute

*Note: If these pressures are exceeded, even for short periods, damage can result. In these instances a pressure reducing valve should be installed.

The incoming hot water temperature must be a minimum of 10°C above the outgoing water temperature to ensure the correct function of the thermostatic cut off.

All thermostatic products should be tested and cleaned at least once a year, mesh filters (6) within nut (5) should be periodically checked and cleaned to maintain flow.

When drilling or preparing walls take care not to disturb existing water or electrical supplies that may be buried within the wall.

Supply pipes should maintain the maximum diameter until immediately before the fitting.

Hot and cold supply pressures should be as closely balanced as possible for best results. The differential between the hot and cold water supply temperatures should be sufficient to allow correct mixing function; **the maximum hot / cold pressure differential ratio is 5:1**. Where pressures are greatly imbalanced flow restricting valves or pressure reducing valves should be installed on the supply with the greater incoming pressure.

Abode products are manufactured in accordance with recognised European standards. Please ensure that your Abode product is fitted in accordance with Local Water Byelaws.

Whilst assembling this product take care not to accidentally loosen any screwed assemblies. PTFE tape can be used to ensure watertight joins on threaded connections, do not over tighten connections or allow pipes to be twisted or folded.

The installation should be periodically checked for damage, if the property is left unattended for a prolonged period we recommend isolating water supplies.

This shower product can be easily converted to be flow limited, simply unscrew the hose (3) and replace either of seals (4) with the included flow restricting washer to limit the maximum water usage to 8 litres a minute irrespective of the incoming water pressure. Note: The flow of water should pass through the black o-ring side of the flow limiter first to function correctly.

Abode is a registered trademark of Abode Home Products Limited. All errors and omissions excepted.

The logo for Abode Home Products Limited, featuring the word 'abode' in a lowercase, sans-serif font. The letter 'a' is stylized with a vertical line extending upwards from its top.

Manufacturers Reference
AB2316 ©Abode 10/2010

Abode Home Products Limited,
Unit L, Zenith Park, Whaley Road, Barnsley, S75 1HT.
Tel: 01226 283434 Fax: 01226 282434 www.abode.eu